

AVS4YOU Programs Help



AVS Registry Cleaner

www.avs4you.com

© Online Media Technologies, Ltd., UK. 2004 - 2009 All rights reserved

Contact Us

If you have any comments, suggestions or questions regarding **AVS4YOU** programs or if you have a new feature that you feel can be added to improve our product, please feel free to contact us.

When you register your product, you may be entitled to technical support.

General information:	info@avs4you.com
Technical support:	support@avs4you.com
Sales:	sales@avs4you.com
Help and other documentation:	help@avs4you.com

Technical Support

AVS4YOU programs do not require any professional knowledge. If you experience any problem or have a question, please refer to the **AVS4YOU Programs Help**. If you cannot find the solution, please contact our support staff.

 **Note:** only registered users receive technical support.

AVS4YOU staff provides several forms of automated customer support:

- **AVS4YOU Support System**

You can use the **Support Form** on our site to ask your questions.

- **E-mail Support**

You can also submit your technical questions and problems via e-mail to support@avs4you.com.

 **Note:** for more effective and quick resolving of the difficulties we will need the following information:

- Name and e-mail address used for registration
- System parameters (CPU, hard drive space available, etc.)
- Operating System
- The information about the capture, video or audio devices, disc drives connected to your computer (manufacturer and model)
- Detailed step by step describing of your action

Please do **NOT** attach any other files to your e-mail message unless specifically requested by AVS4YOU.com support staff.

Resources

Documentation for your AVS4YOU software is available in a variety of formats:

In-product (.chm-file) and Online Help

To reduce the size of the downloaded software installation files the in-product help was excluded from the installation although you can always download it from our web-site for your convenience. Please, visit AVS4YOU web-site at <http://www.avs4you.com/OnlineHelp/index.aspx> to download the latest available version of the help executable, run it and install into the AVS4YOU programs folder. After that you will be able to use it through the **Help** menu of the installed AVS4YOU software.

Online Help include all the content from the In-product help file and updates and links to additional instructional content available on the web. You can find the **Online Help** at our web-site - <http://www.avs4you.com/OnlineHelp/index.aspx>. Please note, that the most complete and up-to-date version of AVS4YOU programs help is always on the web.

PDF Documentation

The offline help is also available as a pdf-file that is optimized for printing. All PDF help files are available for download at the programs pages at AVS4YOU web-site (both <http://www.avs4you.com/index.aspx> and <http://www.avs4you.com/OnlineHelp/index.aspx>). To be able to read and print AVS4YOU PDF help files you will need to have a PDF reading program installed.

User Guides

You have access to a wide variety of resources that help you make the most of your AVS4YOU software. The step-by-step user guides will be of help not only to the novice users but also to the users that face a certain task to be performed and look for a way to do it. Please, visit our **User Guides** section of AVS4YOU web-site at <http://www.avs4you.com/Guides/index.aspx> to read the detailed instructions for various software and tasks

Technical Support

Visit the **AVS4YOU Support** web-site at <http://support.avs4you.com> to ask your questions concerning AVS4YOU software installation, registration and use. Feel free to also use our e-mail address support@avs4you.com.

Downloads

Visit the **Downloads** section - <http://www.avs4you.com/downloads.aspx> - of our web-site to find free updates, tryouts, and other useful software. We constantly update the software, new versions of the most popular programs and new software are also frequently released.

Overview

AVS Registry Cleaner is a special utility that lets the user clean the Windows registry from the unnecessary elements - orphan links, trash keys, program installations leftovers and so on. Sometimes these items can dramatically increase the size of the Windows registry and slow down the system.

AVS Registry Cleaner scans the registry for the useless and trash entries and removes them keeping the registry size smaller, thus enhancing your computer performance.

To start **AVS Registry Cleaner** go to **Start** menu and choose **All Programs -> AVS4YOU -> System Utilities -> AVS Registry Cleaner**.

Introduction to the Registry

The registry is a system-defined database in which applications and system components store and retrieve configuration data, information and settings for all the hardware, operating system software, most non-operating system software, users, preferences of the personal computer, etc. The data stored in the registry varies according to the version of Windows used.



Note: in the latest Windows versions - Windows XP, Windows Vista - the registry does not physically exist as a single file, it is a virtual entity composed of different files in the system, some of which are created during the system boot and exist only during the Windows user session and are deleted once the computer is shut down.

If there is an error in the registry, your system may not function properly. **AVS Registry Cleaner** helps you scan your registry for some possible problems and try and fix them to improve the overall computer performance.



Note: most of the registry changes in Windows versions require a user to have **Administrator** permissions to perform them; in Windows Vista you will additionally need to run the program as administrator to get the full access to all the program features.



Note: it is not recommended to edit the registry data unless it is absolutely necessary, that is your computer experiences slow performance issues, some programs behave inadequately and so on. Please make sure you create a **backup** each time you scan and fix some registry problems.

The registry contains the following hives (logical sections that form the larger parts of the registry):

- **HKEY_CLASSES_ROOT (HKCR)** - stores information about the system registered applications, such as file associations tying them to the applications used to handle these associations. In fact this hive combines data from the `HKLM\Software\Classes` and `HKEY_USERS\Current_User's_SID\Classes` registry sections.
- **HKEY_CURRENT_USER (HKCU)** - stores settings that are specific to the currently logged-in user.
- **HKEY_LOCAL_MACHINE (HKLM)** - stores settings that are general to all users on the computer - information about system hardware drivers, services, software and Windows settings.
- **HKEY_USERS (HKU)** - contains subkeys corresponding to the `HKEY_CURRENT_USER` keys for each user profile actively loaded on the machine, though user hives are usually only loaded for currently logged-in users.
- **HKEY_CURRENT_CONFIG** - contains information gathered at runtime; information stored in this key is not permanently stored on disk, but rather regenerated at the boot time.

Below is the list of registry categories, which are scanned by **AVS Registry Cleaner** and the registry hives and sections that contain these categories:

- **COM/ActiveX** - registry categories in which the COM-servers used by various applications are registered (in-process servers (.dll files) or out-of-process servers (.exe files)). The program scans for the .dll or .exe links in the registry that point to the nonexistent files on the computer hard disk drive. A COM-server can also link to a type library (usually a .tlb-file) that does not exist. In case the *DefaultIcon* registry subkey is present in the category, the program will also scan for the presence or absence of the file containing the file icons. The registry sections scanned by **AVS Registry Cleaner** are:

- HKLM\Software\Classes
- HKU\Classes

- **Application Paths** - registry category used to store the full paths to the applications launched using the **Run** window or command prompt. The program scans for the nonexistent paths to the applications and deletes the entries if these files could not be found. The registry section scanned by **AVS Registry Cleaner** is:

- HKLM\Software\Microsoft\Windows\CurrentVersion\App Paths\

- **Uninstall Entries** - registry category used for programs installation/deinstallation paths entries. The program scans for the nonexistent paths to the applications installer/uninstaller files and deletes the entries if these files could not be found. The registry sections scanned by **AVS Registry Cleaner** are:

- HKLM\Software\Microsoft\Windows\CurrentVersion\Uninstall\
- HKU\Software\Microsoft\Windows\CurrentVersion\Uninstall\

- **File Extensions** - registry category used to store the full paths to the applications, file icons and additional commands associated with the file extensions. The program scans for the nonexistent paths to the applications and deletes the entries if these files could not be found. The registry sections scanned by **AVS Registry Cleaner** are:

- HKLM\Software\Classes
- HKU\Classes

- **Windows Fonts** - registry category used to store the full paths to the Windows fonts or the font file name (in this case the font file must be present in the \Windows\Fonts\ directory). The program scans for the nonexistent paths to the font files and deletes the entries if these files could not be found. The registry section scanned by **AVS Registry Cleaner** is:

- HKLM\Software\Microsoft\Windows NT\CurrentVersion\Fonts

- **Help Files** - registry category used to store the full paths to the Windows programs helps. The program scans for the nonexistent paths to the helps files and deletes the entries if these files could not be found. The registry sections scanned by **AVS Registry Cleaner** are:

- HKLM\Software\Microsoft\Windows\Help
- HKLM\Software\Microsoft\Windows\HTML Help

- **Internet Explorer typed URLs** - registry category used to store the history of the URL-addresses typed in the Internet Explorer address bar. The program scans for the presence of these entries. The registry section scanned by **AVS Registry Cleaner** is:

- HKU\Software\Microsoft\Internet Explorer\TypedURLs

- **Explorer MRU* list** - registry category used to store the history of the entered **Run** window commands, recent documents list, last visited pages and opened and saved files. The program scans for the presence of these entries. The registry sections scanned by **AVS Registry Cleaner** are:

- HKU\Software\Microsoft\Windows\CurrentVersion\Explorer\RunMRU
- HKU\Software\Microsoft\Windows\CurrentVersion\Explorer\RecentDocs
- HKU\Software\Microsoft\Windows\CurrentVersion\Explorer\ComDlg32\LastVisitedMRU
- HKU\Software\Microsoft\Windows\CurrentVersion\Explorer\ComDlg32\OpenSaveMRU

- **Search Assistant MRU* list** - registry category used to store the history of the entered **Search** window commands. The program scans for the presence of these entries. The registry sections scanned by **AVS Registry Cleaner** are:

- HKU\Software\Microsoft\Search Assistant\ACMrU\5001
- HKU\Software\Microsoft\Search Assistant\ACMrU\5603
- HKU\Software\Microsoft\Search Assistant\ACMrU\5004
- HKU\Software\Microsoft\Search Assistant\ACMrU\5647

- **Media MRU*** **list** - registry category used to store the history of the latest media files played by the Windows Media Player. The program scans for the presence of these entries. The registry sections scanned by **AVS Registry Cleaner** are:
 - HKU\Software\Microsoft\MediaPlayer\Radio\MRUList
 - HKU\Software\Microsoft\MediaPlayer\Player\RecentURLList
 - HKU\Software\Microsoft\MediaPlayer\Player\RecentFileList
- **Shared DLLs** - registry category used to store the full paths to the library files (DLLs) that can be used by several programs. The program scans for the nonexistent paths to the files and deletes the entries if these files could not be found. The registry section scanned by **AVS Registry Cleaner** is:
 - HKLM\Software\Microsoft\Windows\CurrentVersion\SharedDlls
- **Sounds and App Events** - registry category used to store the full paths to the Windows sound files used by various applications. The program scans for the nonexistent paths to the sound files and deletes the entries if these files could not be found. The registry section scanned by **AVS Registry Cleaner** is:
 - HKU\AppDataEvents\Schemes\Apps\
- **Windows Startup** - registry category used to store the full paths to the applications which are executed automatically during the system startup. The program scans for the nonexistent paths to the files and deletes the entries if these files could not be found. The registry sections scanned by **AVS Registry Cleaner** are:
 - HKLM\Software\Microsoft\Windows\CurrentVersion\Run
 - HKU\Software\Microsoft\Windows\CurrentVersion\Run

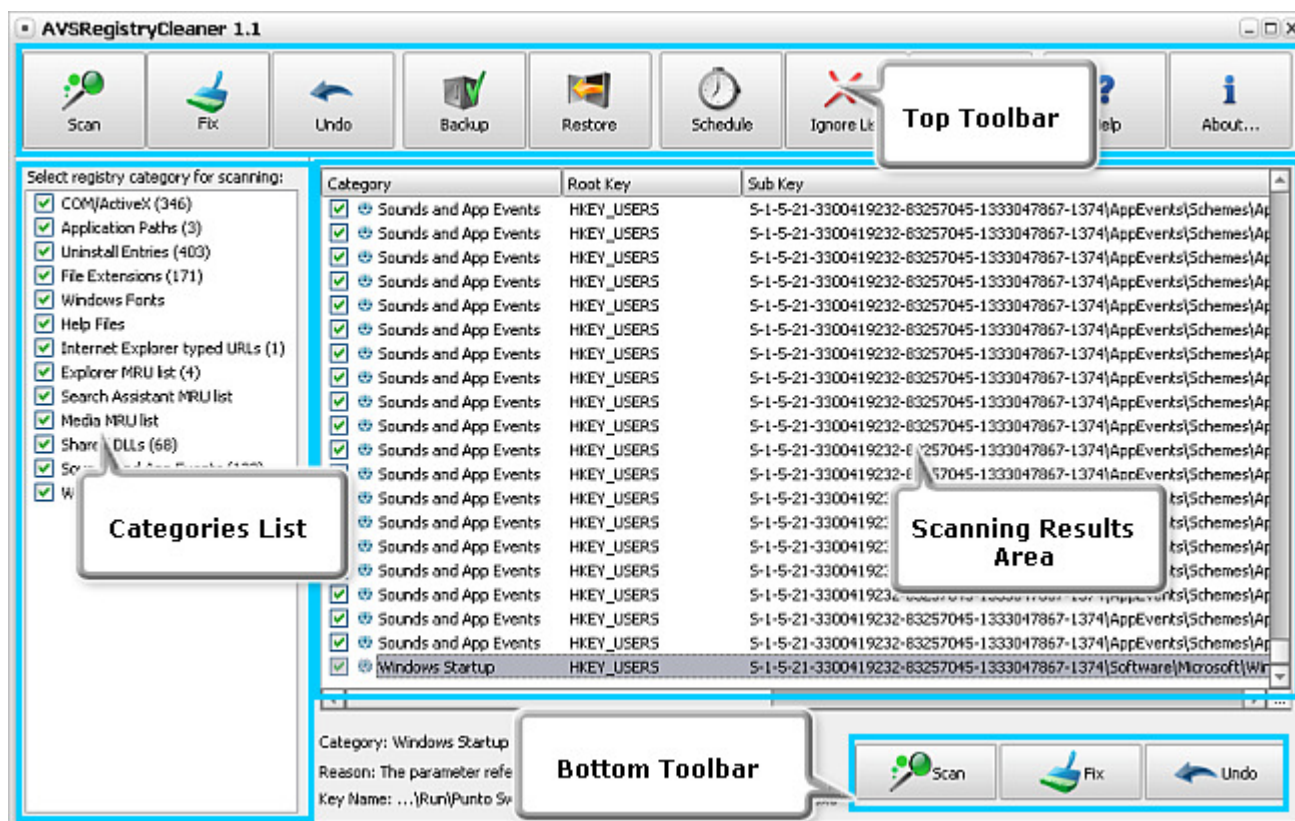


Note: **AVS Registry Cleaner** searches not only the `HKEY_CURRENT_USER` registry hive, but also the `HKEY_USERS` that store data for all the user on the computer. Please make sure you do **backup** your windows registry before you **fix** the existing problems.

* **MRU** - Most Recently Used

Program Interface

AVS Registry Cleaner interface is quite simple to use and lets the user perform all the actions with a few mouse clicks. The program **Main Window** looks the following way:







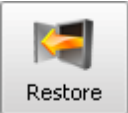





The **Top Toolbar** lets the user access all the program options and actions, while the **Bottom Toolbar** is designed for a quicker access to the program main features: **scanning**, **fixing** and **reverting** the latest changes:



The **Top Toolbar** consists of the following buttons:



	Use this button to start the registry scanning . You will need to select the registry categories to be scanned from the Main Window Categories List , otherwise all the registry entries will be scanned.
	Use this button to start the fixing process. The program will try and find the best solution for all the selected items in the Scanning Results List .
	Use this button to revert the latest changes to the registry. This option is only available if you select the Automatically create Undo file for Fixed data in the program Options window.
	Use this button to create a backup of your system registry.

 Restore	Use this button to restore a previously saved system registry from a backup.
 Schedule	Use this button to create a scanning schedule so that the program could scan your computer registry and fix the existing problems automatically at the selected time.
 Ignore List	Use this button to open the Ignore List window and manage the list of the entries excluded from the scanning and fixing.
 Options	Use this button to open the Options window to change the program settings.
 Help	Use this button to open the AVS4YOU Programs Help file.
 About...	Use this button to open the About the Program window with the information on the program version and the end-user license agreement.

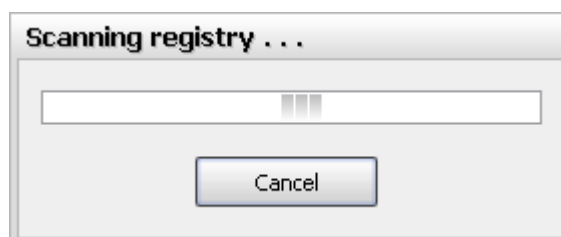
Scanning and Fixing



The registry scanning is a fully automated process. This means that the program will do everything itself and the only thing you can do is to select the registry categories you would like to be included in the scan. Please, read the **Introduction to the Registry** section to learn more about the registry structure and categories.

You can select several categories ticking or unticking them using the mouse. It is possible to unmark all the categories at once using the right-click menu and selecting the **Uncheck All** menu option. The opposite **Check All** option is used to select all the categories for scanning.

After you make your selection of the registry categories to be scanned, click the **Scan** button to start the scanning process:



Once the scanning is over, the results list will be displayed in the main program window:

Category	Root Key	Sub Key
<input checked="" type="checkbox"/> COM/ActiveX	HKEY_LOCAL_MACHINE	Software\Classes\TypeLib\{18BEB7F2-CA98-11D1-B6E7-00A0
<input checked="" type="checkbox"/> COM/ActiveX	HKEY_LOCAL_MACHINE	Software\Classes\TypeLib\{1A0DD8A0-DBBC-40D9-AABD-0D9
<input checked="" type="checkbox"/> COM/ActiveX	HKEY_LOCAL_MACHINE	Software\Classes\TypeLib\{1A31287A-4D7D-413E-8E32-3B37
<input checked="" type="checkbox"/> COM/ActiveX	HKEY_LOCAL_MACHINE	Software\Classes\TypeLib\{1B1D0286-1A03-4E7D-A5E1-0220
<input checked="" type="checkbox"/> COM/ActiveX	HKEY_LOCAL_MACHINE	Software\Classes\TypeLib\{1C565858-F302-471E-B409-F180
<input checked="" type="checkbox"/> COM/ActiveX	HKEY_LOCAL_MACHINE	Software\Classes\TypeLib\{1F86A16E-6CED-4386-8FEB-0CC9
<input checked="" type="checkbox"/> COM/ActiveX	HKEY_LOCAL_MACHINE	Software\Classes\TypeLib\{20A46155-D810-4752-A42A-C1B2
<input checked="" type="checkbox"/> COM/ActiveX	HKEY_LOCAL_MACHINE	Software\Classes\TypeLib\{20AB73F7-B5DC-4300-ACCC-230
<input checked="" type="checkbox"/> COM/ActiveX	HKEY_LOCAL_MACHINE	Software\Classes\TypeLib\{20C62CAE-15DA-101B-B9A8-4449
<input checked="" type="checkbox"/> COM/ActiveX	HKEY_LOCAL_MACHINE	Software\Classes\TypeLib\{2142E92A-761C-4635-BD04-6E91
<input checked="" type="checkbox"/> COM/ActiveX	HKEY_LOCAL_MACHINE	Software\Classes\TypeLib\{218CB45F-20B6-11d2-8E17-0000
<input checked="" type="checkbox"/> COM/ActiveX	HKEY_LOCAL_MACHINE	Software\Classes\TypeLib\{2230D875-4817-43F8-9D62-8930

Category: COM/ActiveX

Reason: The parameter refers to a nonexistent catalog

Key Name: ...{1.0}\HELPDIR\{Default}=



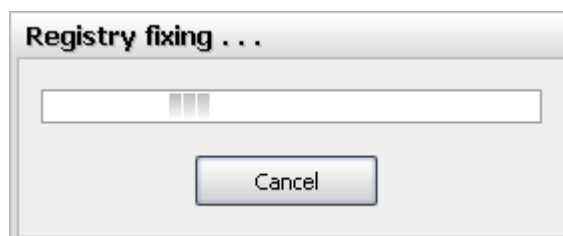
You can select an item from the list and click it with the mouse. The description of the problem will be given under the **Reason** caption below the list.



Before you start the fixing process, you can either select the items to be fixed or deselect any of them. Use the mouse button and check or uncheck the appropriate items. To select/deselect all the items use the right mouse button and choose the **Check All/Uncheck All** options from the right-click menu.

If you want some of the items to be permanently excluded from the scanning and fixing, use the **Ignore List** option.

When ready, click the **Fix** button to start the process of registry errors correction:



The process will take some time, then the program will inform you about the fixing is done with the message.

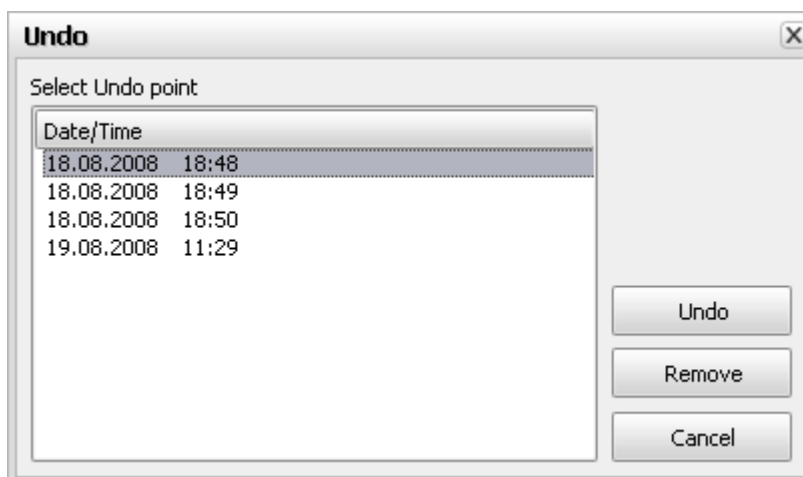
Note: some of the changes to the registry will become effective and noticeable only after the system reboot.



In case you would like to revert the changes you have just made to your registry, click the **Undo** button to return to the state that the registry had before you clicked the **Fix** button.

Note: the **Undo** process is only available if you select the **Automatically create Undo file for Fixed data** in the program **Options** window.

The following window will be opened for you to select an undo point out of the list of available ones:



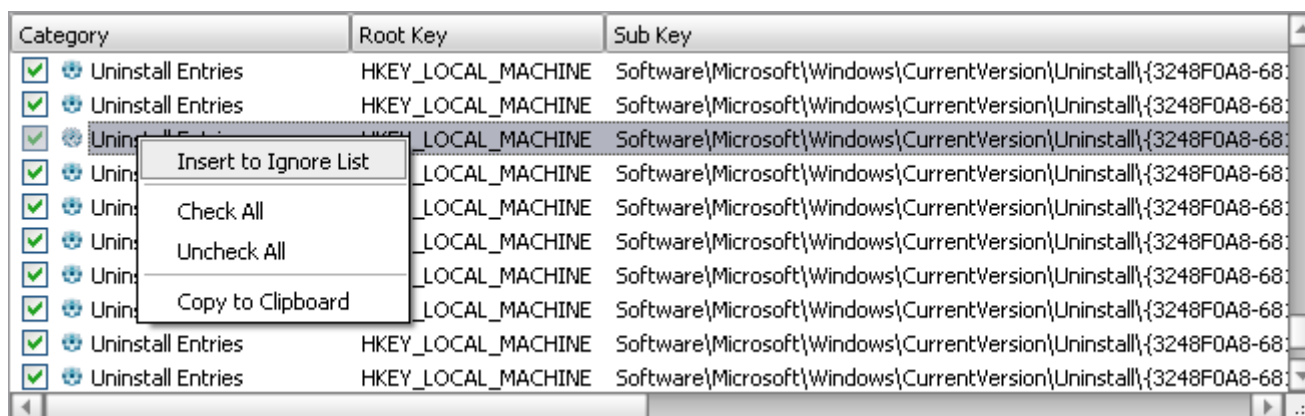
Select the undo point and click the **Undo** button. All the registry entries deleted during the fix operation at the undo point will be restored to the state they had before the fixing had been done. The **Remove** button is used to delete the undo points you no longer need. **Cancel** is used to close the window and cancel the reverting process.

Ignore List

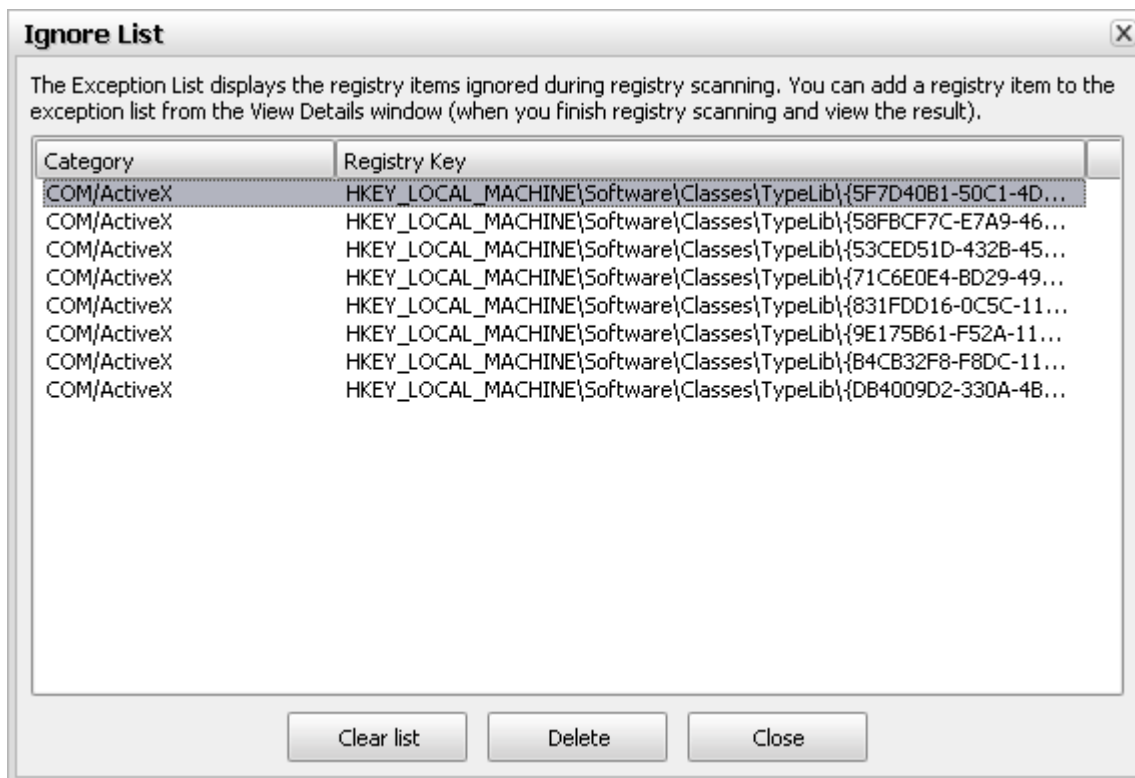


If you constantly encounter some errors while scanning the registry that you know must not be fixed, you can add them to the **Ignore List** so that the program did not remind you about them any more.

When the scan is completed, click the item you want to exclude from the future scanning and fixing with the right mouse button and select the **Insert to Ignore List** option:



The element will become unchecked and added to the **Ignore List**, i.e. excluded from any future scans. You can see the full list of all the ignored items clicking the **Ignore List** button of the **Top Toolbar**. The following window will be opened:



Here you can delete the elements from the list using the **Delete** button, in this case the next time you scan the system registry the items deleted from the **Ignore List** will be found by the program, shown in the problem list and fixed if you select them to.

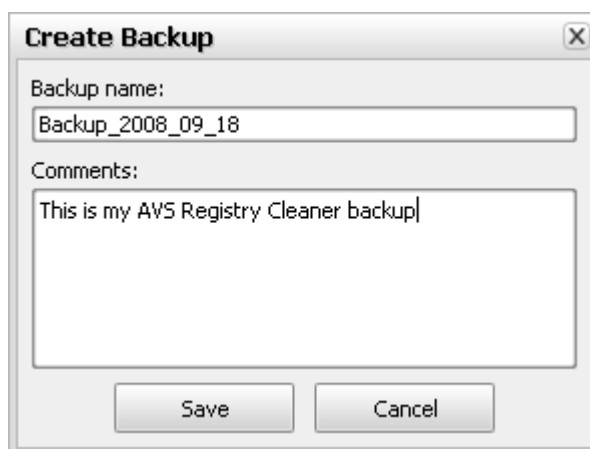
It is also possible to remove all the items from the list using the **Clear All** button or close the window and continue work with **AVS Registry Cleaner** using the **Close** button.

Creating Backup and Restoring



Regular register backups will prevent your computer from data loss and will let you return to the saved state whenever needed.

To create a registry backup click the **Backup** button of the program **Top Toolbar**. The following window will be opened:

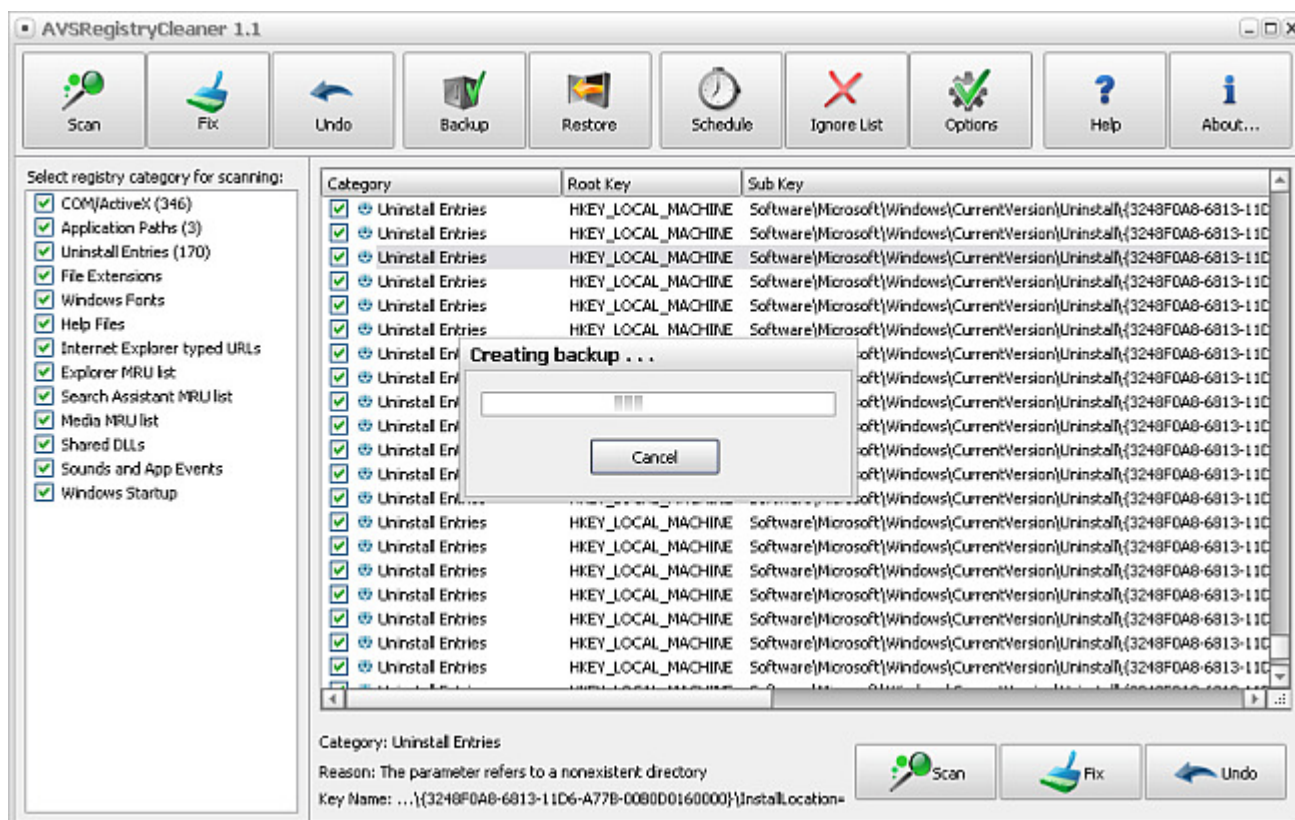


You can enter a unique backup name so that you will be able to recognize the backup in the future and restore the registry to this exact state and add some description with more information on this backup.

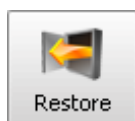


Note: you cannot select the folder where to save your backups in this window. The path to your backups is set in the **Options** window, so please select it beforehand.

Click the **Save** button to start backup creation process. It will take some time:



Finally the program will notify you about the successful process completion.



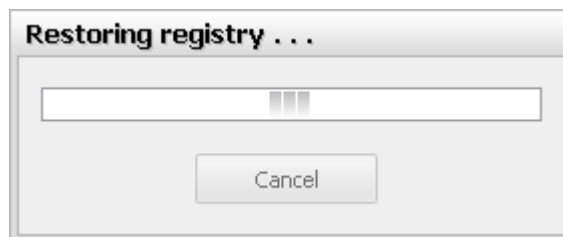
The saved backups will let you restore the system registry whenever you need it or in case you simply want to return to some system state that you had in the past.

Click the **Restore** button of the **Top Toolbar**. **AVS Registry Cleaner** will suggest that you select a backup to restore to from the list of available ones:



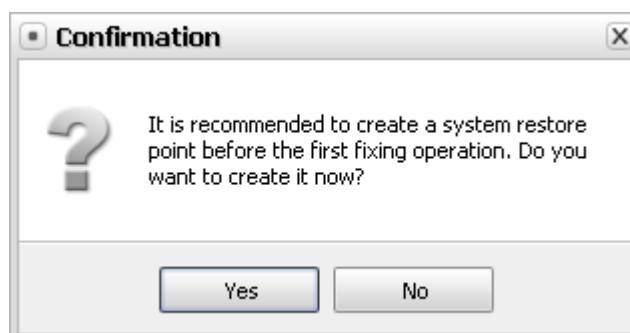
Note: all the created backups will be displayed on the list, even if you changed the folder where to save them using the **Options** window.

You can click the **Delete** button to remove the selected backup from the list and from the computer hard disk drive. Click the **Restore** button to start the restoring process and return to the saved system registry state. It will take some time:



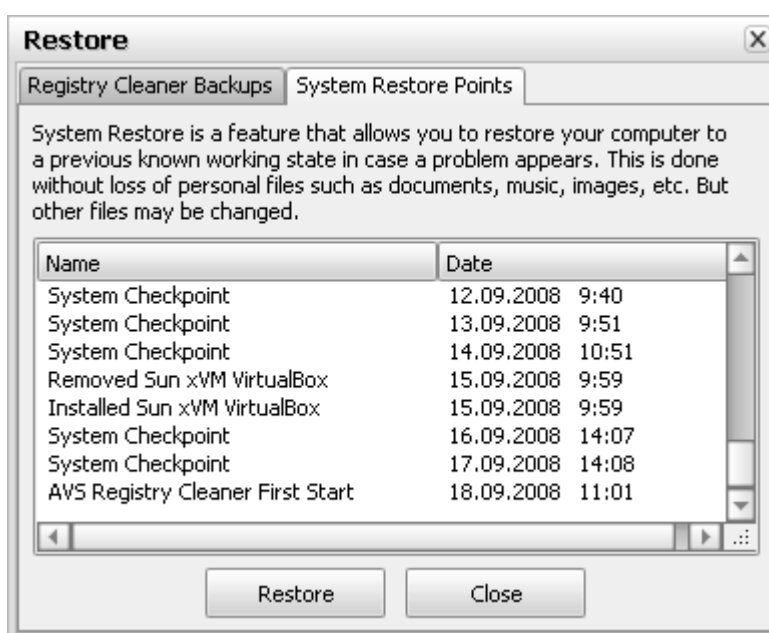
Once the restoring process is done, the program will inform you on that and your computer will need to be restarted for the changes to take effect.

When you run the program for the first time, **scan** for errors in the Windows registry and click the **Fix** button, **AVS Registry Cleaner** will suggest that you create the system restore point to prevent possible future problems:

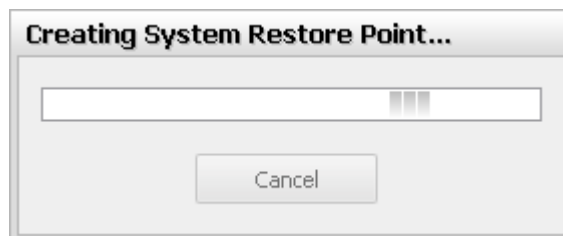


Note: creating a **System Restore Point** is a standard Windows option and can be used only in case it is not disabled in the Windows options. Please make sure it is enabled: click the **My computer** icon on the desktop or the **Start** menu with the right mouse button and select **Properties**, then the **System Restore** tab and uncheck the **Turn off System Restore on all drives** option.

In case you agree to create a system restore point, you will be able to access it later using the standard Windows **System Restore** option of the **Control Panel** or through the **Restore** window of **AVS Registry Cleaner**. Click the **Restore** button of the **Top Toolbar** and select the **System Restore Points** tab:



The restore point created with **AVS Registry Cleaner** will be available under the **AVS Registry Cleaner First Start** caption. Select it with your mouse and click the **Restore** button. The system will be restored to the state it had before the system restore point creation:



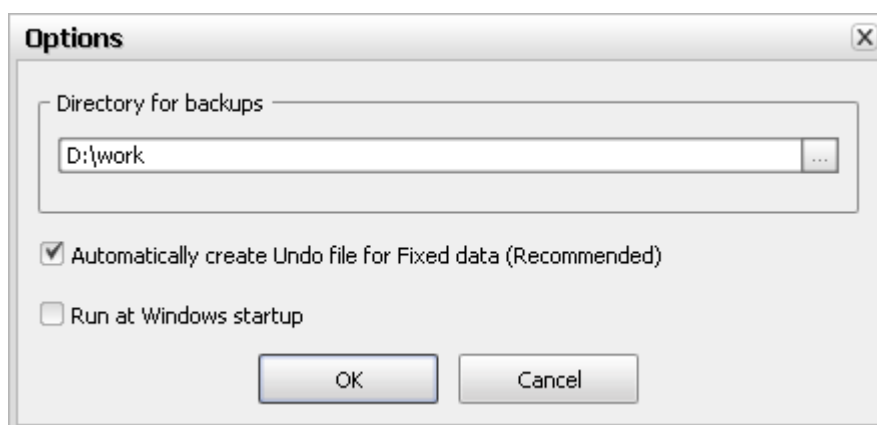
Note: System Restore is usually done without loss of personal files such as documents, music, images, etc. At the same time some other system files will be changed to roll back your system to the previous state.

Changing Program Options



You can change the basic program options using the program **Options** window. To open it click the **Options** button of the program **Top Toolbar**.

In the opened window the following options can be changed:



- **Directory for backups** - use this option to select the directory for the backup files used by default. This path will be used for all the **registry backups** that you will create.
- **Automatically create Undo file for Fixed data** - use this option to create a file that will let you rollback your system registry after the fixing is done.

Note: it is strongly recommended to leave this option on.

- **Run at Windows startup** - use this option to run **AVS Registry Cleaner** every time you boot into Windows.

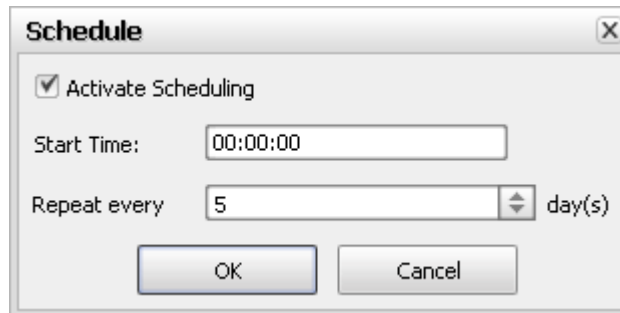
After you make your selection, click the **OK** button to accept the changes or **Cancel** to discard any changes and close the **Options** window.

Setting Scheduling Options



If you want to automate the work of **AVS Registry Cleaner** and let it perform its tasks once, say, a week you will need to use its embedded **Scheduler** function. It will let you repeat the registry scanning at a selected period of time.

The **Scheduler** tab lets the user set the following options:



- **Activate Scheduling** - use this option to turn the scheduler on and off to select whether the program should perform automatic scans or not (when this box is checked the scheduler is active, when unchecked - inactive).
- **Start Time** - use this option to set the time of day (hours:minutes:seconds) when the program must start the registry scanning.
- **Repeat every... day(s)** - use this option to set the time interval for scanning repetitions.

After you set the scheduler click the **OK** button to accept changes, or **Cancel** to discard any changes made.